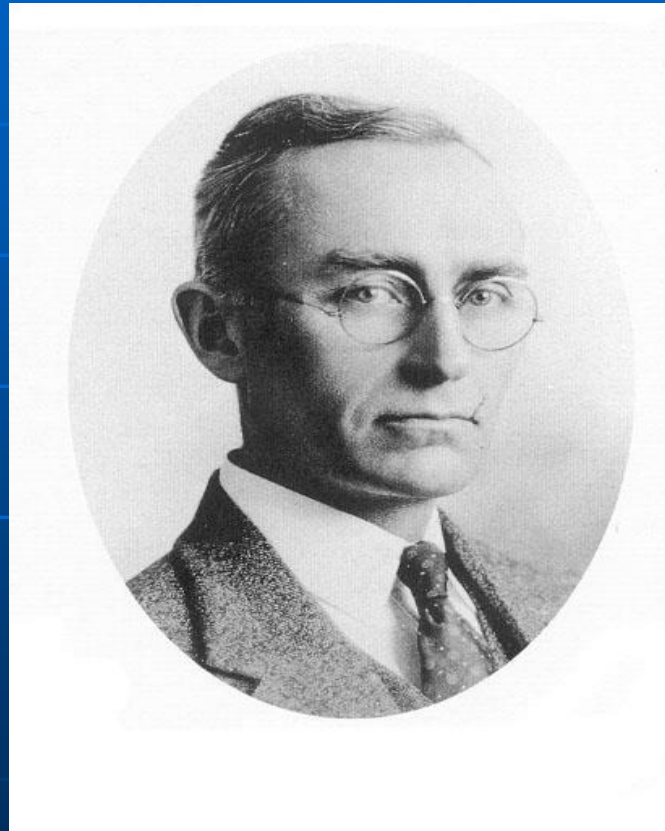


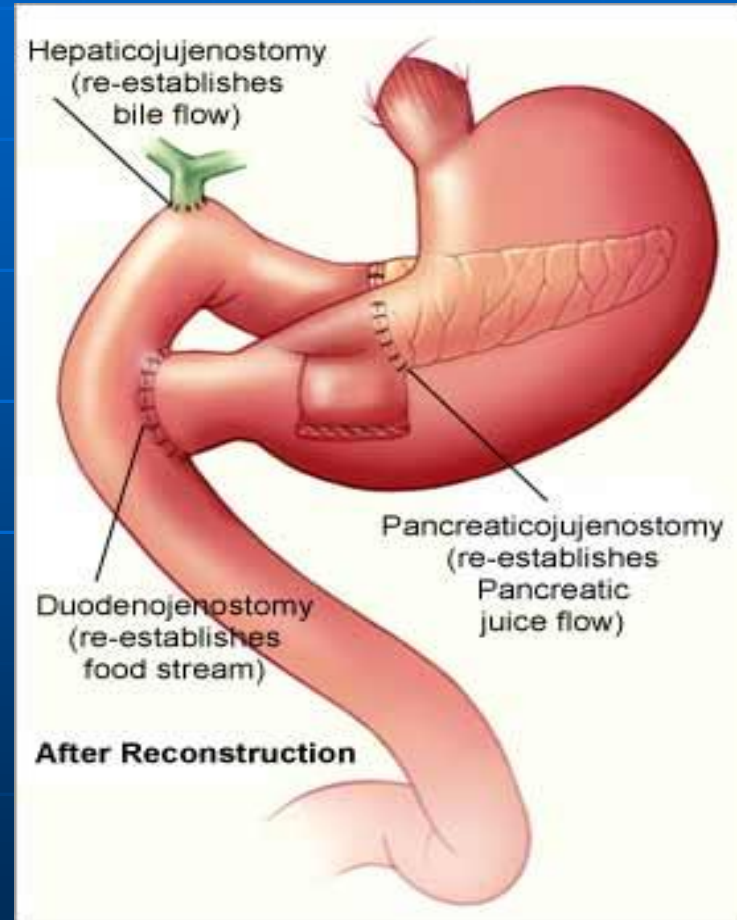
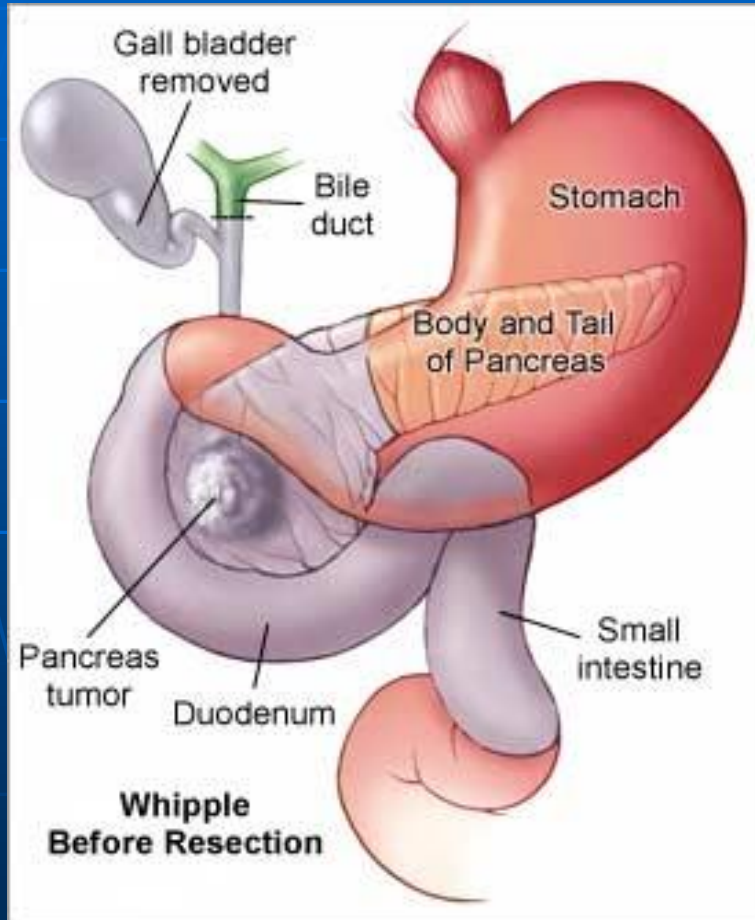
Whipple Procedure



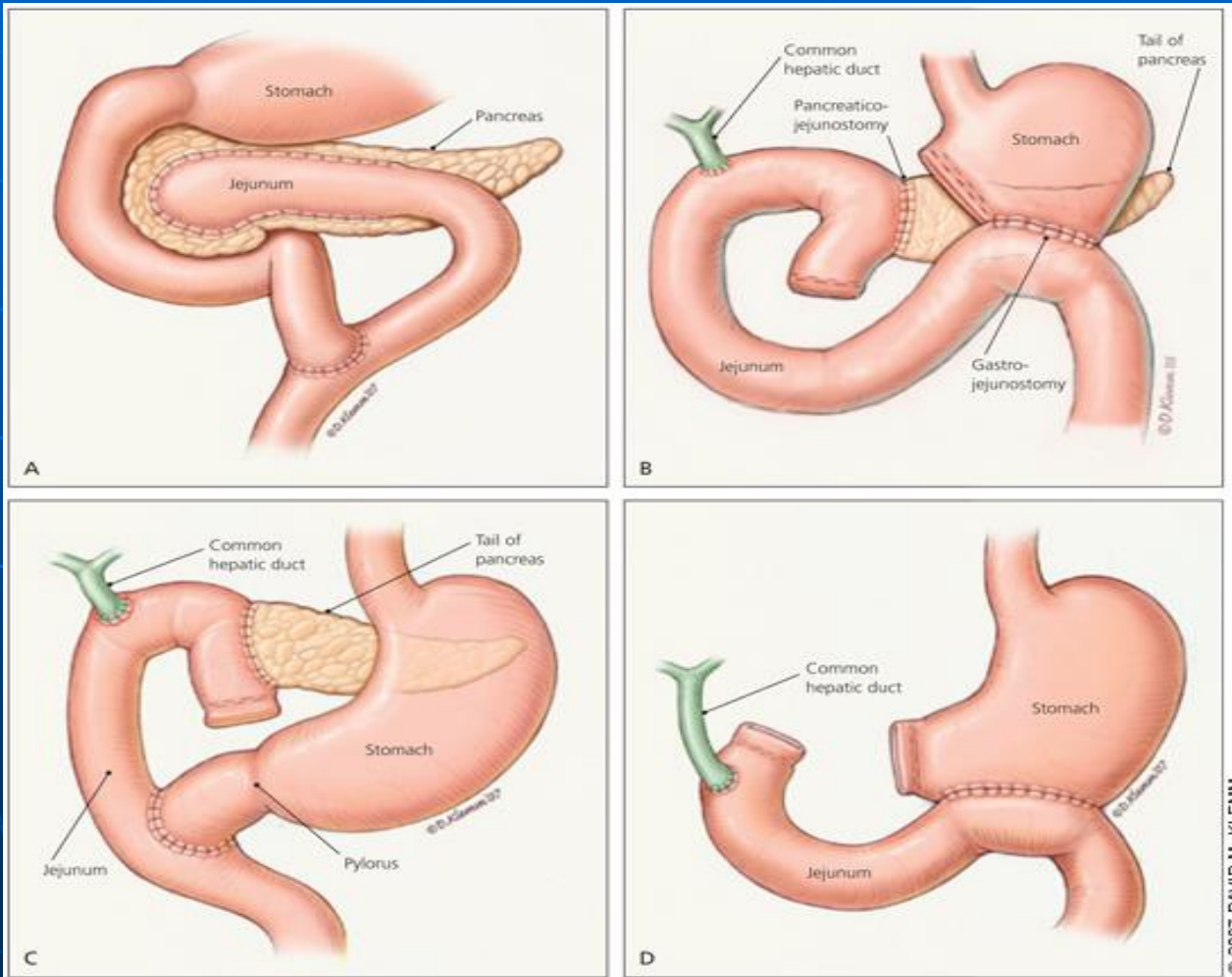
Introduction

- Was first described in the 1930's by Allen Oldfather Whipple
- The most common operation performed for pancreatic cancer and may be used to treat other cancers such as small bowel cancer
- Removal of the head of the pancreas, most of the duodenum (a part of the small intestine), a portion of the bile duct and sometimes a portion of the stomach

The Procedure



Variants



When It Can Be Performed

A Whipple procedure is performed for:

- Cancer of the head of the pancreas
- Cancer of the duodenum
- Cholangiocarcinoma (cancer of the the bottom end of the bile)
- Cancer of the ampulla
- Benign (non-cancerous) disorders such as chronic pancreatitis and benign tumors of the head of the pancreas

Outcomes

- Up to 25% of patients died from the surgery in the 1960's and 1970's
- Today, the mortality rate from the operation is 5%-20%
- Outcome from surgery for a Whipple operation is dependent on the **experience of the hospital and the surgeon** performing the surgical operation
- The operation is usually curative in patients with benign or low grade cancers of the pancreas